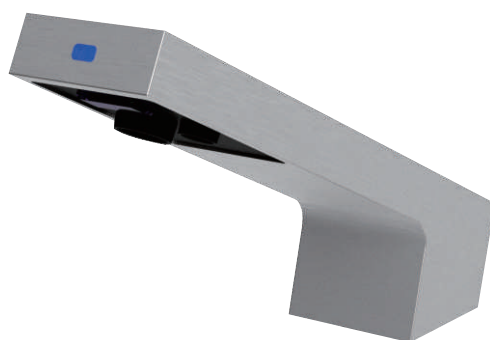


HK-FS

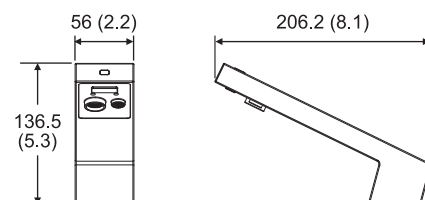
Automatic Deck Mounted Water-Soap Tap



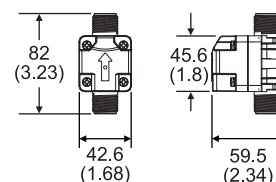
Technical Specification

Adaptor Required	Input: 100-240Vac, Output: DC 6V
Sensor Range	120 ± 20 mm
Switch Sensor Range	70 ± 20 mm
Standby Light	Blue light (Faucet Mode)
Room Temperature	5-40 °C (41-104 °F)
Applicable Water Temperature	5-60 °C (41-140 °F)
Operating Water Pressure	7-87 PSI
Shut-off Delay Time (Only Water)	60 seconds auto shut off
Time Out Setting	0.5-1 second
Flowing Volume	5.7 LPM [1.5 GPM]
Water Supply Connection	PF 1/2
Soap Pump Life Estimated	100,000 cycles
Viscosity	Liquid: 1-3000 cps (mPa.s) Foam: 1-5 cps (mPa.s), Foaming soap only
Dispensing Volume	Liquid: 1.0-1.2 ml (0.033-0.040 fl oz) Foam: 0.6-0.8 ml (0.020-0.027 fl oz)
Soap Tank Capacity	1500 ml (50.7 fl oz)
Spout Material	Stainless Steel

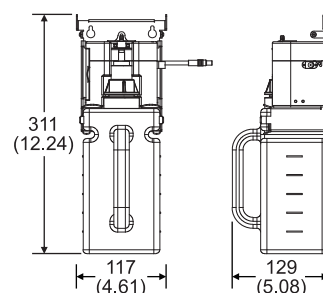
Spout



Mechanism (Water)



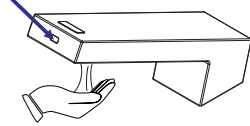
Mechanism (Soap)



Features

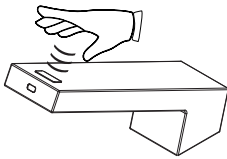
SWITCH BETWEEN WATER AND SOAP DISPENSING:

Blue Light



FAUCET MODE

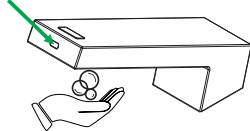
When the light is blue, place hand under the tap head to activate the sensor for water. Remove hand to stop the water flow. Auto Shut-off time is 60 seconds.



MODE SWITCH

To switch to soap dispensing, waive hand at the Switch Sensor on top of the tap head to turn the light green.

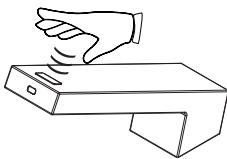
Green Light



SOAP MODE

When the light is green, place hand under the tap head to activate the sensor for soap dispensing, Remove hand after soap is dispensed.

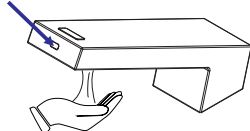
CONTINUOUS WATER FLOW MODE:



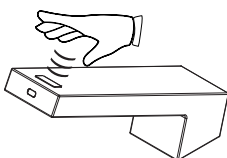
Hover hand on the switch sensor for 3 seconds.



Blue Flash



Continuous water flow mode is activated when the blue light flashes.



Trigger the switch sensor again to stop water flow. Auto shut-off time is 60 seconds.