

# Auto Faucet



**EcoTap-D FA02**



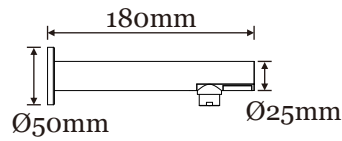
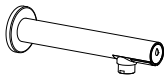
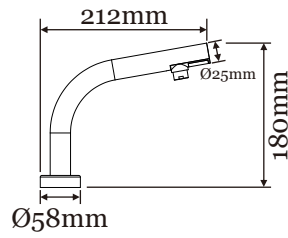
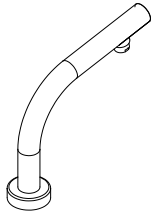
**EcoTap-W FA02**

## Technical Specification

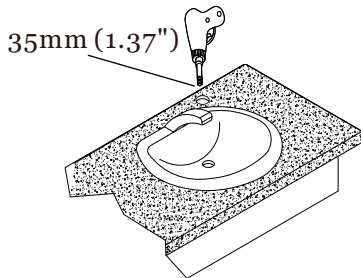
Material	Stainless Steel #304
Power Source	AC (6V)
Standby Power	Less than 0.1W
Sensing Range	120 mm $\pm$ 20 mm auto detecting, adjustable
Applicable Water Temperature	4-85 °C
Operating Water Pressure	10~100 PSI
Delay Time	0.5-1 second
Timing Protection	One minute auto shut off
Flowing Volume	Less than 3.8 l/min
Safety Approval	CE



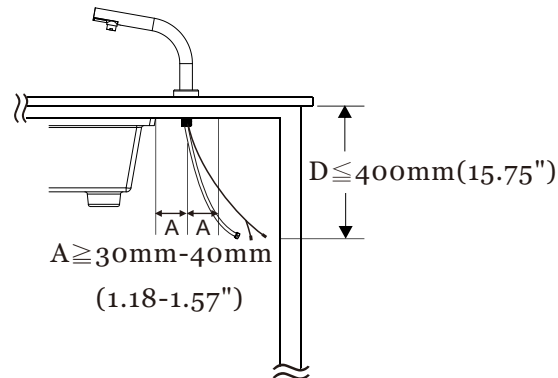
## Unit size



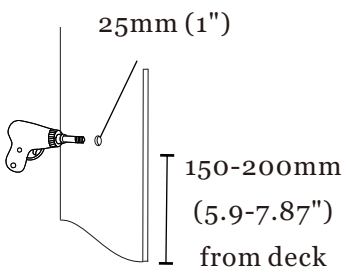
## Installation



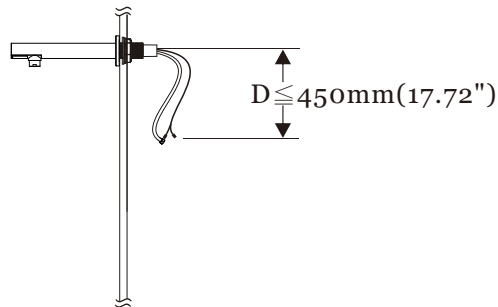
One hole for spout



Recommended deck thickness:  
10-30mm (0.39-1.18")



One hole for spout



Recommended wall thickness:  
10-30mm (0.39-1.18")

